

# SHURE®

THE SOUND OF THE PROFESSIONALS®

222 HARTREY AVE., EVANSTON, IL 60202-3696 U.S.A.  
AREA CODE (312) 866-2200 • CABLE: SHUREMICRO  
TELEX: 4330191 • FAX (312) 866-2279

## PROFESSIONAL PRODUCTS

SHURE®

MODEL SM61

• OMNIDIRECTIONAL DYNAMIC MICROPHONE

TECHNICAL DATA

### GENERAL

The superb physical and acoustic design of the Model SM61 Professional Microphone makes it an outstanding choice for applications that range from remote broadcast interviews or sports coverage to onstage and television hand-held use. The SM61 microphone is virtually insensitive to wind, pop, and handling noises. Because of the unique VERAFLX® grille, the microphone is unparalleled in ruggedness.

The unusual combination of light weight and exceptionally low handling noise in the SM61 is achieved by a special built-in mechanical isolation system between microphone cartridge and case. Breath noise and popping are so effectively controlled by the integral wind and pop filter that the need for add-on windscreens is eliminated in all but the most adverse conditions. The VERAFLX grille protects the microphone against damage from a drop of up to 2 meters (6 feet), resists dents, and is impervious to rust, corrosion, and moisture.

### Microphone Features:

- Very low sensitivity to handling and stand noise
- Built-in breath and pop filter eliminates pop and minimizes wind noise
- VERAFLX grille resists damage from drops, dent-proof and immune to rust, corrosion, and moisture
- Compact, handsome styling - looks good on stage, on screen, on television
- Durable - endures rough usage in the field or studio
- Excellent balance and feel for hand-held use
- Swivel adapter provides snap-in convenience for hand-held or stand-mounted use

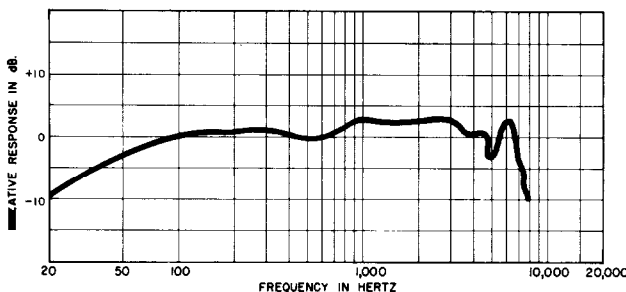
### VARIATIONS

Model SM61-LC: Supplied without cable.

### SPECIFICATIONS

Type  
Dynamic

Frequency Response  
50 to 14,000 Hz (See Figure 1)

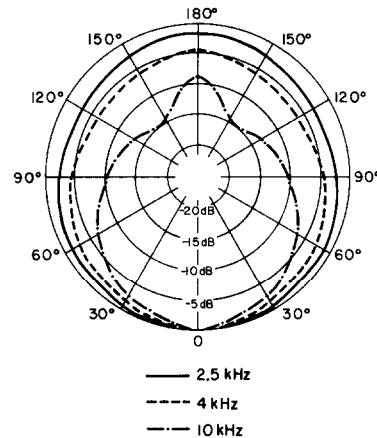


TYPICAL FREQUENCY RESPONSE  
FIGURE 1



### Polar Pattern

Omnidirectional (See Figure 2)



TYPICAL POLAR PATTERNS  
FIGURE 2

### Impedance

Microphone rating impedance is 150 ohms (175 ohms actual) for connection to microphone inputs rated at 19 to 300 ohms

### Output Level (at 1000 Hz)

Open Circuit Voltage ..... -81.5 dB\* (.08 mV)  
Power Level ..... -60.5 dB\*\*

\*0 dB = 1 volt per microbar

\*\*0 dB = 1 milliwatt per 10 microbars

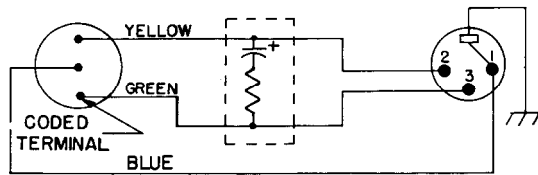
### Hum Pickup (typical)

31 dB equivalent SPL in a 1 millioersted field

### Phasing

Positive pressure on diaphragm produces positive voltage on pin 2 with respect to pin 3 (See Figure 3)

CARTRIDGE NETWORK THREE-PIN PROFESSIONAL AUDIO CONNECTOR



**INTERNAL CONNECTIONS**  
**FIGURE 3**

**Case**

Aluminum and VERAFLX®

**Finish**

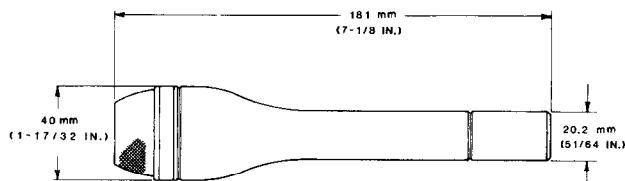
Matte metallic

**Swivel Adapter**

Snap-in, positive-action, adjustable from 0° to 90°, with standard 5/8"-27 thread

**Dimensions**

See Figure 4



**OVERALL DIMENSIONS**  
**FIGURE 4**

**Net Weight (less cable)**

147 grams (5.2 ounces)

**Packaged Weight**

SM61-LC: 404 grams (14 oz)

**ARCHITECT'S SPECIFICATIONS**

The microphone shall be a moving coil (dynamic) type with a frequency response of 50 to 14,000 Hz. The unit shall have an omnidirectional horizontal polar characteristic. The microphone shall have a rating impedance of 150 ohms for connection to microphone inputs rated at 19 to 300 ohms.

The microphone output shall be -60.5 dB where 0 dB = 1 milliwatt per 10 microbars.

The microphone shall be provided with a swivel adapter adjustable through 90° from vertical to horizontal.

The overall dimensions shall be 181 mm (7-1/8 in.) in length and 40 mm (1-17/32 in.) in diameter.

The microphone swivel adapter shall permit the microphone to be placed into and removed from the adapter with a smooth "snap-in" movement. The adapter will be equipped with 5/8"-27 thread for mounting on a standard microphone stand fitting.

The microphone shall be the Shure Model SM61 or equivalent.

**FURNISHED ACCESSORY**

Swivel Adapter .....A57D

**OPTIONAL ACCESSORIES**

Desk Stand ..... S37A, S39A  
Isolation Mount ..... A53M  
TRIPLE-FLEX® Cable and Plug (7.6m - 25 ft) ..... C25F  
Windscreen ..... A61WS

**REPLACEMENT PARTS**

Cartridge .....R61  
Grille Assembly ..... RK164G