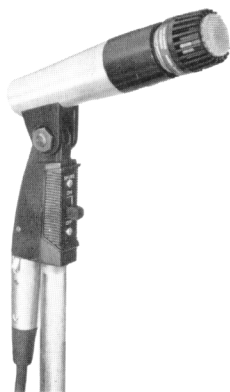


® SHURE ®

# PROFESSIONAL ENTERTAINER MICROPHONES



**MODEL PE54SH  
UNIDYNE® III**

Your selection of a Shure UNIDYNE® Microphone will contribute significantly to the professional quality of your performance. Shure UNIDYNE Microphones are unidirectional. This means that they pick up sound only from the front of the microphone. They suppress unwanted audience noise or other noises occurring at the rear of the microphone. You can work at significantly greater distances (up to 75% more) from the microphone than with non-directional microphones, without picking up objectionable background sound or the very annoying loud-speaker "squeal" (feedback). You don't have to lean over your instrument and get close to the microphone in order to be heard.

*(See inside for information on how to use your  
Shure Microphone more effectively.)*

## **HOW TO CONTROL FEEDBACK**

A performer's number one enemy in using a microphone is "feedback." This is a harsh hum, howl or squeal which occurs when the microphone picks up sound from the loudspeakers, re-amplifies and rebroadcasts it over and over again.

The key factor in the prevention of feedback is the position of the loudspeakers in relation to the microphone. Feedback occurs if the microphone picks up sound coming from the loudspeakers. Keep the loudspeakers as far to the sides as possible—so they do not point toward the microphone. Always keep the microphone pointed toward the performer and away from the loudspeakers. When stage monitor loudspeakers are used, make sure they are positioned in front of the performers and face the rear of the microphone.

If you are in a room with hard walls, floor, and ceiling, the sound from the loudspeakers may bounce back into the microphone and create feedback. Solve this problem by turning down the amplifier volume control and working closer to the microphone.

(Important Note: If you cannot solve the feedback problem with your UNIDYNE® III microphone, a Shure Feedback Controller is suggested.)

## **BASIC POINTS FOR PROFESSIONAL MICROPHONE TECHNIQUE**

Proper microphone technique will add to the overall effectiveness with which you project yourself to your audience. Keep the following points in mind when using the microphone:

1. Maintain the proper distance from the microphone. When you wish to achieve an intimate tonal quality, get closer to the microphone and lower your voice. For wide-open "driving" effects, raise your voice and back away from the microphone so that you do not overdrive your amplifier to distortion.
2. Don't change your distance from the microphone needlessly, as this will affect the level of sound coming from the loudspeakers.
3. Consider the microphone as an instrument and practice your technique to enhance your performance.

## **YOUR SHURE MICROPHONE IS BUILT TO LAST!**

Your Shure Microphone is ruggedly built and should give you years of uninterrupted service; however, remember that it is a sensitive instrument. Avoid dropping the microphone, or subjecting it to unnecessarily rough treatment. Normal usage, of course, will not impair performance of the unit. Use the protective carrying case to prevent damage not only when traveling, but also when storing the microphone.

## **MICROPHONE CHECK-LIST**

1. Check microphone impedance—is it correct for the amplifier input being used?
2. Check microphone cable connectors to microphone, mixer and amplifier—are they tightly plugged in?
3. Check microphone, amplifier and/or mixer.
  - a. Are they turned on?
  - b. Are volume controls turned up?

## **IF THE MICROPHONE DOES NOT WORK**

Check the above list. If the microphone then does not appear to be operating, check it on a spare cable. If the microphone still does not appear to be operating, have the microphone and cable checked by your Shure Professional Entertainer Products Dealer, or write Service Department, Shure Brothers Inc.

## **PHASING**

To test two microphones and/or their cables for proper phasing, connect them to an amplifier and talk or sing into them while holding them three or four inches apart. The sound from the speakers should be the same when talking into either microphone or directly between them if they are in phase with each other. If the sound drops drastically, or if a dead spot is found when talking between the two microphones, they are out of phase. All cables and microphones should be tested in this manner to insure that they are in phase with each other.

To change the phase of a microphone, the microphone cartridge leads must be interchanged (see Figure 2). This should be performed by your dealer, the Shure Factory Service Department, or other qualified service personnel.

## **IMPEDANCE**

Your microphone is supplied wired for high impedance for connection to high-impedance microphone inputs. To change the microphone wiring for connection to low-impedance microphone inputs (rated at 19 to 300 ohms), remove the two screws holding the switch. Taking care not to break any leads, remove the switch and switch housing from the microphone swivel. With a long-nose pliers, lift upward and disconnect the 2-terminal black plastic impedance selection socket from the back of pin 3 of the audio connector. Replace the socket with pin 3 inserted in socket terminal "L". Press the plastic socket firmly in place. Reassemble the switch housing, switch, and switchplate, taking care not to pinch any leads. Fasten securely with the two previously removed screws.

**NOTE:** After following the above directions, the PE54SH with the supplied single-conductor shielded C5-X cable will be suitable for connection to unbalanced low-impedance inputs. For balanced-line low-impedance operation, replace the C5-X cable with the C51CN cable: 7.6m (25 ft) two-conductor shielded, with three-pin professional audio connectors (male and female.)



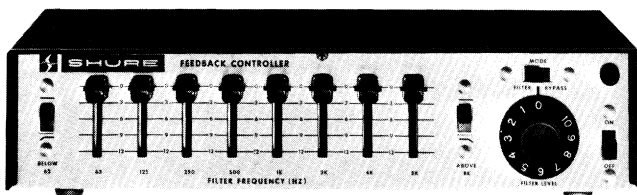
## USING MORE THAN ONE MICROPHONE

It is often desirable for a group to use a separate microphone for each individual performer. In this case, the following points should be remembered:

1. It is best if the microphones are individually controlled for volume through a separate Shure microphone mixer. *If this is not possible, it is desirable that each performer use the same type and model of microphone so that the group as a whole will be "balanced."*
2. Check the placement of the microphones with relation to loudspeakers (as previously mentioned) so that feedback is minimized.
3. As additional microphones are added the possibility of feedback increases. Turn off, or down, unused microphones to help solve this problem.

## SHURE FEEDBACK CONTROLLER

Lets you "tune" your sound system to the acoustics of the room. The result is more overall sound power *without* feedback. Eight linear-motion filter controls are infinitely variable from 0 to 12 dB cut. Below 63 Hz and Above 8 kHz roll-off switches attenuate low and high frequencies. Can be installed between mixer or console and amplifier for total system control, or following each microphone as a single-channel preamplifier with feedback control.





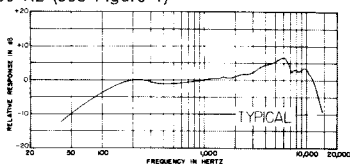
**THE VITAL LINK  
BETWEEN YOU AND  
THE AUDIENCE**

SHURE PROFESSIONAL ENTERTAINER  
MICROPHONES

# MODEL PE54SH SPECIFICATIONS

**Type:** Dynamic, Cardioid (unidirectional)

**Frequency Response:** 50 to 15,000 Hz (see Figure 1)



**FIGURE 1**

**Impedance:** Dual. High: Microphone impedance is "High" for connection to high-impedance microphone inputs.

Low: Microphone rating impedance is 150 ohms (275 ohms actual) for connection to microphone inputs rated at 19 to 300 ohms.

Wired for high impedance as supplied (see Page 4.)

**Output Level**  
(at 1,000 Hz):

	IMPEDANCE	
	High	Low
Open Circuit Voltage*	-55.0 dB (1.77 mV)	-78.0 dB (.124 mV)
Power Level**		-58.5 dB

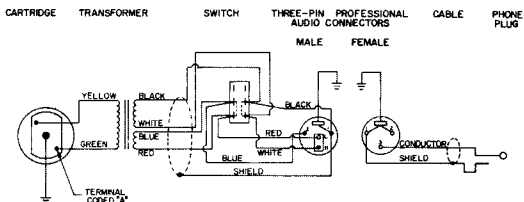
\*0 dB = 1 volt per microbar

\*\*0 dB = 1 milliwatt with 10 microbars

**Phasing:**

High Impedance: Positive pressure on diaphragm produces positive voltage on Pin 1. (See Figure 2 and Page 4.)

Low Impedance: Positive pressure on diaphragm produces positive voltage on Pin 2. (See Figure 2 and Page 4.)



**FIGURE 2**

## GUARANTEE

This Shure product is guaranteed in normal use to be free from electrical and mechanical defects for a period of one year from date of purchase. Please retain proof of purchase date. This guarantee includes all parts and labor. This guarantee is in lieu of any and all other guarantees or warranties, express or implied, and there shall be no recovery for any consequential or incidental damages.

## SHIPPING INSTRUCTIONS

Carefully repack the unit and return it prepaid to:

Shure Brothers Incorporated  
Attention: Service Department  
1501 West Shure Drive  
Arlington Heights, Illinois 60004

If outside the United States, return the unit to your dealer or Authorized Shure Service Center for repair. The unit will be returned to you prepaid.

## MODEL PE54SH SPECIFICATIONS (Continued)

- Switch:** Slide-to-talk, locking type On-Off switch, integral part of swivel mount
- Connector:** Equipped with professional three-pin female audio connector\*
- Shock Mount:** Internal rubber vibration-isolator
- Case:** Black and chrome finish metal and black ARMO-DUR® with stainless steel grille
- Cable:** 6.1m (20 ft) single-conductor shielded cable with professional three-pin male audio connector\* on microphone end and ¼ in. phone plug on equipment end
- Net Weight:** 425 grams (15 oz) less cable
- Packaged Weight:** 1.16 kg (2 lb, 9 oz)
- \* Designed to mate with Cannon XL series, Switchcraft A3 (Q.G.) series, or equivalent connector

## FURNISHED ACCESSORIES

- Carrying Case:** 90C1413
- Lockplate:** 90NR1371

## OPTIONAL ACCESSORIES

- Desk Stand:** S33B, S37A, S39A, or S40A
- Disconnect Adapter:** A47
- Line Matching Transformer:** A95 Series
- Windscreen:** A2WS

## REPLACEMENT PARTS

- Cartridge:** R45
- Switch:** RK32S
- Cable:** C5-X

AREA CODE 312/866-2200

CABLE SHUREMICRO



SHURE BROTHERS INC.  
222 HARTREY AVENUE  
EVANSTON, ILLINOIS 60204  
U.S.A.

Copyright 1980  
Shure Brothers Inc.  
27A1560 (TC)

Printed in U.S.A.  
U.S. Patents 3,132,713  
and 3,240,883